



data sheet

BENEFITS

Easy to Install and Manage Fiber Accessory

Supports ZoneFlex 7762-AC, 7762-S-AC, and 7761-CM outdoor access points. Field serviceable and field replaceable components with separate in service and out of service integrated fiber management spools. Includes fiber demarcation point to ensure proper installation provider workflow management, and includes mating sleeves for SC/UPC or LC-Duplex termination

Multiple Fiber Interface Options

EPoN/DPoE, Colorless 1000Base-LX, and CWDM capable

Rich Suite of Management and Monitoring Capabilities

Management and monitoring standards supported include IEEE 802.3ah OAM. EPoN management supports CTC OAM and DPoE including built in diagnostics. 1000Base-LX management supports TS-1000 compliance, remote loopback, IP based remote management, SNMP V1, V2C (4 RMON groups and SNMP traps)

Lower deployment costs for hot spot rollouts

Leverage existing aerial real estate via cable or existing poles near fiber drops. Build a mesh network easier and at less cost than pulling Ethernet cable to each station

Fiber Node Accessory

FIBER ACCESSORY FOR THE 7762-AC, 7762-S-AC, AND THE 7761-CM STRAND MOUNTED OUTDOOR APS

The Industry's Most Flexible and Easy to Install Outdoor Fiber Media Converter Accessory for the ZoneFlex 7762 Series Outdoor AP

The ZoneFlex 7762 Series Fiber Node Accessory is the most flexible deployment option for carriers and municipalities whose best option for deploying outdoor Wi-Fi is via fiber. In environments where fiber is available either underground or pole mounted, the 7762 Fiber Accessory is the perfect accessory to add on to the existing 7762 pole or strand mounted outdoor AP.

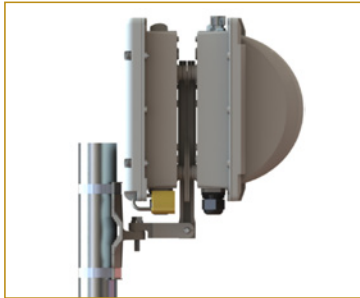
As a standard media converter, the Fiber Node works with the ZoneFlex 7762-AC, the 7762-S-AC or the 7761-CM strand mounted version for overhead deployments. The mounting bracket seamlessly integrates onto the existing ZoneFlex unit while fitting the Fiber Node on the back allowing for many mounting options and is field installable.

Service providers who have aerial fiber with AC power near an area with communication zone access can leverage the fiber node and generate more revenue. By meshing from existing strand mount access, the Fiber Node can be leveraged as a mesh node to create hot spots in high density areas. Further, by eliminating the need to pull ethernet cable with the mesh network, cost and deployment efforts are diminished increasing the return on a hot zone project.

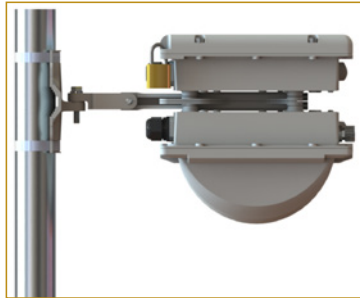
Fiber Node Accessory

FIBER ACCESSORY FOR THE 7762-AC,
7762-S-AC, AND THE 7761-CM STRAND
MOUNTED OUTDOOR APS

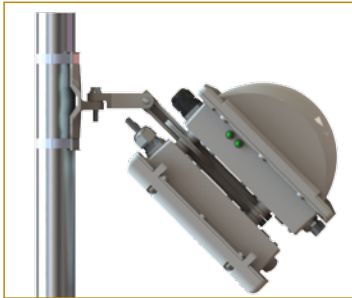
FIBER NODE MOUNTING OPTIONS



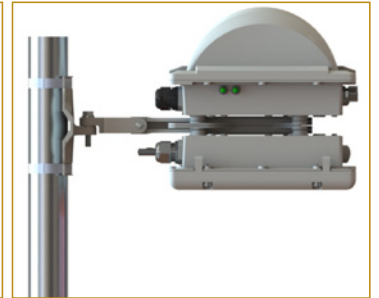
Direct forward facing beam



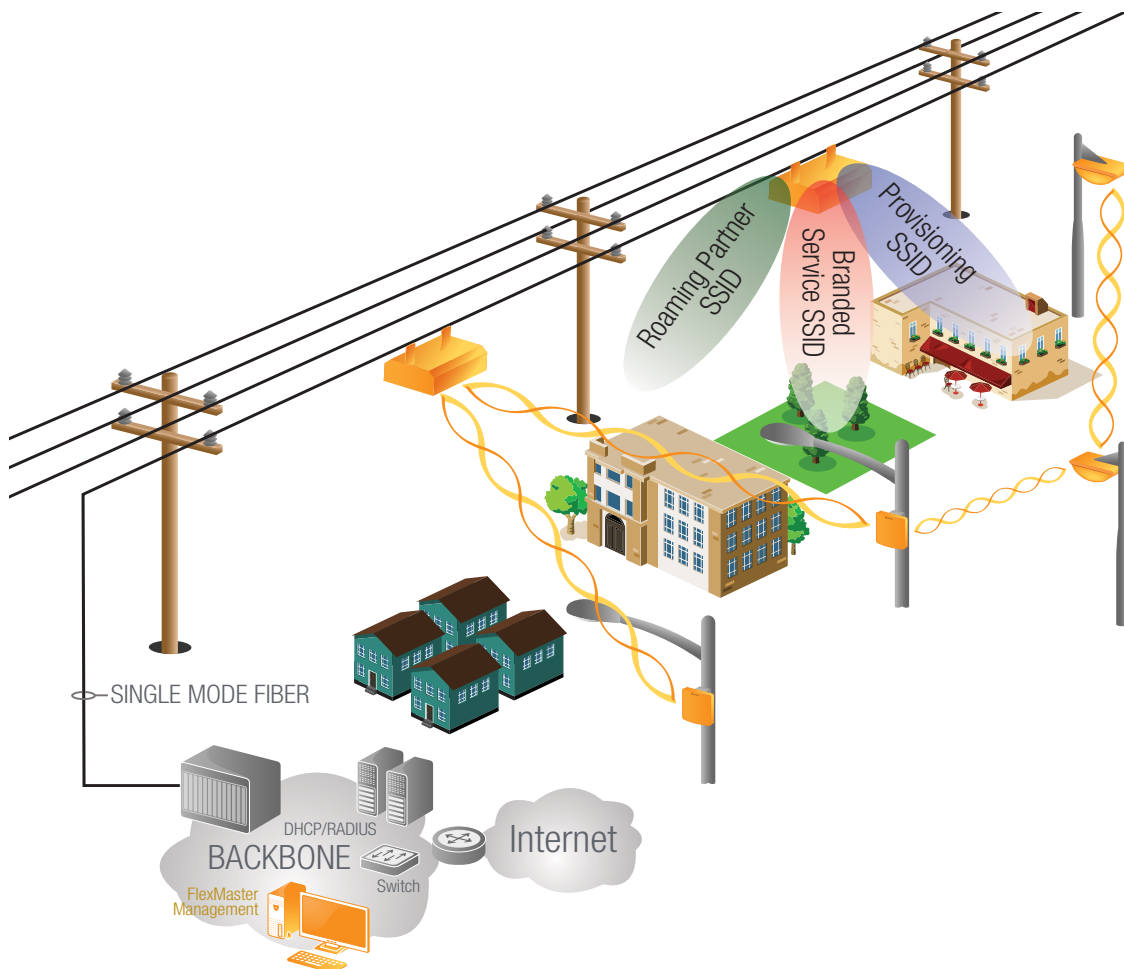
Pole mounted with downward facing beam



Diagonally pointing beam

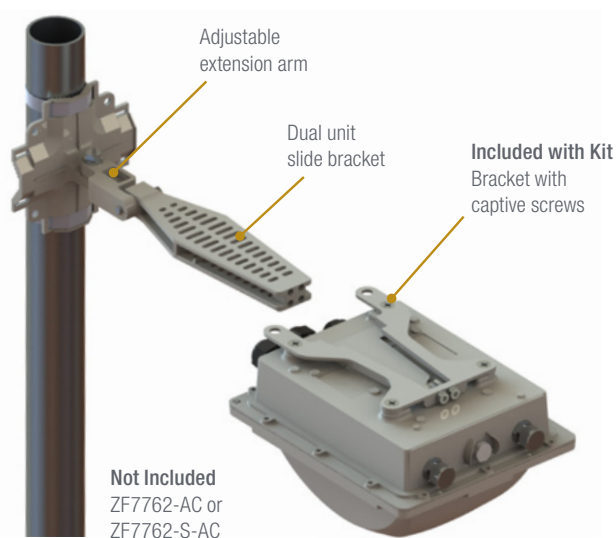
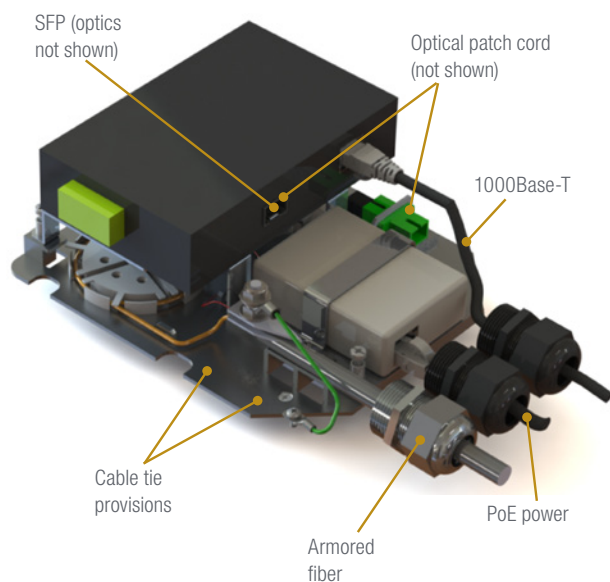
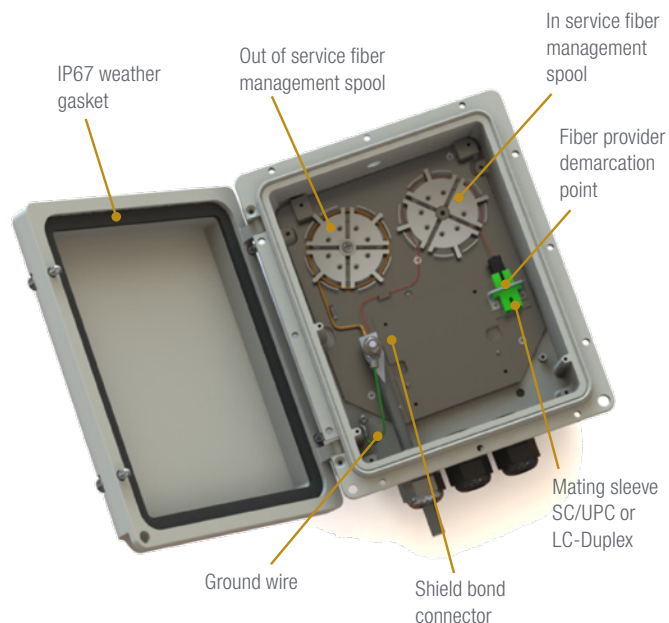
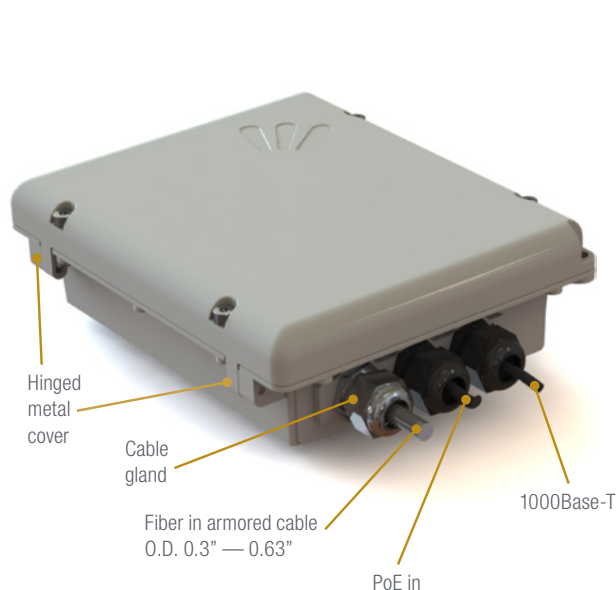


Upward facing beam



Fiber Node Accessory

FIBER ACCESSORY FOR THE 7762-AC,
7762-S-AC, AND THE 7761-CM STRAND
MOUNTED OUTDOOR APS



Specifications

PHYSICAL CHARACTERISTICS	
POWER	<ul style="list-style-type: none"> 7 W PoE
PHYSICAL SIZE	<ul style="list-style-type: none"> 239.05 mm (9.4 in) L x 195.05mm (7.7 in) W x 77.2 mm (3 in) H
WEIGHT	<ul style="list-style-type: none"> 7 Lbs.
ETHERNET PORTS	<ul style="list-style-type: none"> 1 port, MDX auto-sensing RJ45 10/100/1000 Mbps 1 port, MDX auto-sensing RJ45 10/100 Mbps Power over Ethernet (802.3af) PD
ENVIRONMENTAL CONDITIONS	<ul style="list-style-type: none"> IP-67 rated Extended temperature range: -40°C – 60° C (-40°F – 149°F)

EPON OPTICAL SPECIFICATIONS	
REACH	<ul style="list-style-type: none"> EPON/DPoE 20Km reach 9/125µm SMF SC/UPC
FOOTPRINT	<ul style="list-style-type: none"> EPON ONU in MSA SFP footprint
RECEPTICAL	<ul style="list-style-type: none"> Single fiber bi-directional SC receptacle
Tx POWER	<ul style="list-style-type: none"> 1310µm -1 dBm (min) to 4 dBm (max)
Rx SENSITIVITY	<ul style="list-style-type: none"> 1500µm -27 dB (min)
COMPATABILITY	<ul style="list-style-type: none"> Compatible with EPON OLTs and CPE equipment
MISCELLANEOUS	<ul style="list-style-type: none"> Meets China Telecom EPON equipment technical requirement V2.1

1000BASE-LX SPECIFICATIONS	
REACH	<ul style="list-style-type: none"> 1000Base-LX 10Km reach 9/125µm SMF LC-Duplex
RECEPTACLE	<ul style="list-style-type: none"> Dual fiber unidirectional LC-Duplex receptacle
Tx POWER	<ul style="list-style-type: none"> 1310 µm -9 to -3 dBm
Rx SENSITIVITY	<ul style="list-style-type: none"> 1310 µm -19 dBm max

MANAGEMENT AND MONITORING CAPABILITIES	
EPoN	<ul style="list-style-type: none"> Supports CTC OAM and DPoE IEEE 802.3ah-2005 compliance Built-in digital diagnostics
1000Base-LX	<ul style="list-style-type: none"> IEEE 802.3ah-2005 compliance TS-1000 compliance IP based remote management SNMP V1, V2C, (4 RMON groups and SNMP traps)

Class 1 Laser Products and comply with US FDA regulations.

These products are certified by TÜV and CSA to meet the Class 1 eye safety requirements of EN (IEC) 60825 and the electrical safety requirements of EN (IEC) 60950.

Product Ordering Information

MODEL	DESCRIPTION
Full Accessory Kits	
902-0202-1000	Fiber Node, EPON/DPoE, SM, 20Km, gray. Includes enclosure, media adapter, SFP optics, cables, fiber patch cord/wall brackets, 7762-AC bracket, fasteners. Does not include ZoneFlex Access Point
902-0203-1000	Fiber Node, 1000Base-LX, SM, 10Km, gray. Includes enclosure, media adapter, SFP optics, cables, fiber patch cord/wall brackets, 7762-AC bracket, fasteners. Does not include ZoneFlex Access Point
Individual Components	
902-0200-0000	Weather-tight fiber optic enclosure, gray, field installable accessory for 7762-AC. Includes slide bracket, 7762 bracket, enclosure, fiber spools, cable shield bond, data cables and optical mating sleeves for SC/UPC and LC-duplex. Does not include media converter, optic transceiver or fiber cable. Does not include ZoneFlex Access Point
902-0201-0000	Managed industrial media converter, SFP fiber optic slot, 12-48 VDC, -40 to 60C, includes pre-wired power adapter and outdoor rated data cables
902-0202-0000	EPON optical network terminal, SFP optic module, 20Km reach, single mode, SC/UPC, -40 to 85C, includes SC/UPC fiber patch cable
902-0203-0000	1000Base-LX, SFP (mini-GBIC) optic module, single mode, 10Km reach, LC duplex, -40 to 85C. Includes LC-Duplex fiber patch cable
902-0101-0000	Kit, Spare, Strand Mount Bracket for Fiber Node (7762-AC and 7762-S-AC)